

TABLE 1.
Towson University
Undergraduate Grade Distribution: FALL SEMESTERS

GRADE	F'98	F'99	F'00	F'01	F'02	F'03	F'04	F'05	F'06	F'07
A	14,438	14,838	15,629	16,162	16,570	17,379	16,345	15,974	16,694	22,201
A-	3,201	4,012	4,007	4,377	4,954	5,651	6,958	6,911	7,965	8,080
B+	3,387	3,831	3,946	4,435	4,924	5,185	6,354	6,491	7,352	7,616
B	13,351	12,446	12,347	12,390	12,742	11,797	9,981	10,210	10,634	11,940
B-	2,214	2,515	2,469	2,764	2,946	3,379	4,434	4,671	5,242	5,444
C+	1,722	2,004	2,030	2,086	2,295	2,402	3,093	3,376	3,753	3,780
C	8,225	7,943	7,350	7,010	7,140	6,281	5,629	5,973	6,692	6,882
C-	595	583	564	594	629	580	686	664	1	0
D+	316	383	280	311	316	343	513	553	752	684
D	2,267	2,239	1,997	1,825	1,781	1,598	1,492	1,522	1,751	1,763
F	1,506	1,757	1,391	1,259	1,180	1,433	1,213	1,371	1,641	1,674
FX	1,255	1,593	1,071	889	927	849	925	952	1,024	885
I	492	622	578	430	401	1	390	493	425	453
U	32	58	93	65	60	16	4	19	8	31
UX						30	31	66	89	112
S	1,287	1,334	1,159	1,129	1,178	766	836	943	1,173	1,055
SX						283	391	478	367	461
W	2,535	2,577	3,771	3,312	3,684	3,453	3,732	4,066	4,515	4,865
P	3	1	0	3	1	0	0	0	0	1
PE	118	203	63	138	186	0	0	0	0	
PS	490	427	618	575	500	529	525	547	626	520
IP	0	0	0	0	0	0	0	0	0	108
NR	60	58	74	90	76	2	0	0	0	
NG	0	0	0	0	4	3	0	0	0	2
NP	0	0	0	19	0	0	0	0	0	
UNK	105	128	81	99	117	0	0	0	0	
AU	97	102	135	104	115	98	91	97	129	79
AUX						18	5	10	12	3
AX						24	0	1	0	
AX-						1	0	0	0	
BX						21	1	3	0	
BX-						4	0	0	0	
BX+						5	0	0	0	
CX						7	3	0	0	
CX-						1	0	1	0	
CX+						2	1	1	0	
DX						1	0	0	0	
DX+						1	0	0	0	
FXX						1	1	0	0	
Total:	57,696	59,654	59,653	60,066	62,726	62,144	63,634	65,393	70,845	78,639

Note: Plus & minus grades were implemented in Fall 1998.

Source: MIS100

Prepared by: TU Institutional Research.

TABLE 1. (continued)
Towson University
Percentage Distribution of Undergraduate Grades: FALL SEMESTERS

GRADE	F'98	F'99	F'00	F'01	F'02	F'03	F'04	F'05	F'06	F'07
A	25.0	24.9	26.2	26.9	26.4	28.0	25.7	24.4	23.6	28.2
A-	5.5	6.7	6.7	7.3	7.9	9.1	10.9	10.6	11.2	10.3
B+	5.9	6.4	6.6	7.4	7.9	8.3	10.0	9.9	10.4	9.7
B	23.1	20.9	20.7	20.6	20.3	19.0	15.7	15.6	15.0	15.2
B-	3.8	4.2	4.1	4.6	4.7	5.4	7.0	7.1	7.4	6.9
C+	3.0	3.4	3.4	3.5	3.7	3.9	4.9	5.2	5.3	4.8
C	14.3	13.3	12.3	11.7	11.4	10.1	8.8	9.1	9.4	8.8
C-	1.0	1.0	0.9	1.0	1.0	0.9	1.1	1.0	0.0	0.0
D+	0.5	0.6	0.5	0.5	0.5	0.6	0.8	0.8	1.1	0.9
D	3.9	3.8	3.3	3.0	2.8	2.6	2.3	2.3	2.5	2.2
F	2.6	2.9	2.3	2.1	1.9	2.3	1.9	2.1	2.3	2.1
FX	2.2	2.7	1.8	1.5	1.5	1.4	1.5	1.5	1.4	1.1
I	0.9	1.0	1.0	0.7	0.6	0.0	0.6	0.8	0.6	0.6
U	0.1	0.1	0.2	0.1	0.1	0.0	0.0	0.0	0.0	0.0
UX	0.0	0.0	0.0	0.0	0.0	0.0	0.0	0.1	0.1	0.1
S	2.2	2.2	1.9	1.9	1.9	1.2	1.3	1.4	1.7	1.3
SX	0.0	0.0	0.0	0.0	0.0	0.5	0.6	0.7	0.5	0.6
W	4.4	4.3	6.3	5.5	5.9	5.6	5.9	6.2	6.4	6.2
P	0.0	0.0	0.0	0.0	0.0	0.0	0.0	0.0	0.0	0.0
PE	0.2	0.3	0.1	0.2	0.3	0.0	0.0	0.0	0.0	0.0
PS	0.8	0.7	1.0	1.0	0.8	0.9	0.8	0.8	0.9	0.7
IP	0.0	0.0	0.0	0.0	0.0	0.0	0.0	0.0	0.0	0.1
NR	0.1	0.1	0.1	0.1	0.1	0.0	0.0	0.0	0.0	0.0
NG	0.0	0.0	0.0	0.0	0.0	0.0	0.0	0.0	0.0	0.0
NP	0.0	0.0	0.0	0.0	0.0	0.0	0.0	0.0	0.0	0.0
UNK	0.2	0.2	0.1	0.2	0.2	0.0	0.0	0.0	0.0	0.0
AU	0.2	0.2	0.2	0.2	0.2	0.2	0.1	0.1	0.2	0.1
AUX	0.0	0.0	0.0	0.0	0.0	0.0	0.0	0.0	0.0	0.0
AX	0.0	0.0	0.0	0.0	0.0	0.0	0.0	0.0	0.0	0.0
AX-	0.0	0.0	0.0	0.0	0.0	0.0	0.0	0.0	0.0	0.0
BX	0.0	0.0	0.0	0.0	0.0	0.0	0.0	0.0	0.0	0.0
BX-	0.0	0.0	0.0	0.0	0.0	0.0	0.0	0.0	0.0	0.0
BX+	0.0	0.0	0.0	0.0	0.0	0.0	0.0	0.0	0.0	0.0
CX	0.0	0.0	0.0	0.0	0.0	0.0	0.0	0.0	0.0	0.0
CX-	0.0	0.0	0.0	0.0	0.0	0.0	0.0	0.0	0.0	0.0
CX+	0.0	0.0	0.0	0.0	0.0	0.0	0.0	0.0	0.0	0.0
DX	0.0	0.0	0.0	0.0	0.0	0.0	0.0	0.0	0.0	0.0
DX+	0.0	0.0	0.0	0.0	0.0	0.0	0.0	0.0	0.0	0.0
FXX	0.0	0.0	0.0	0.0	0.0	0.0	0.0	0.0	0.0	0.0
	100.0	100.0	100.0	100.0	100.0	100.0	100.0	100.0	100.0	100.0

Note: Plus & minus grades were implemented in Fall 1998.

Source: MIS100

Prepared by: TU Institutional Research.

Towson University

Undergraduate Grade Distributions: Fall Semesters

%

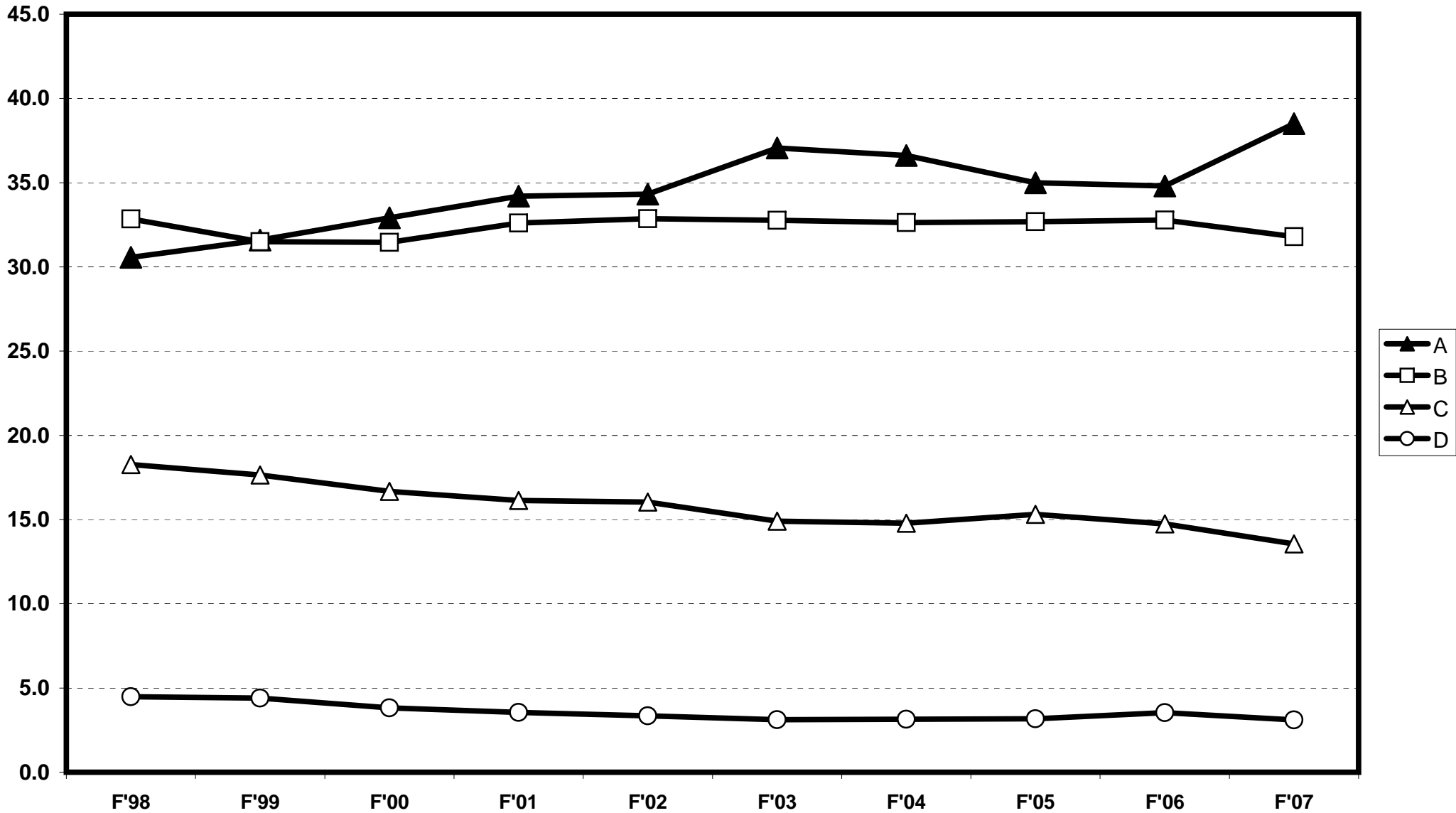


TABLE 2.
Towson University
Undergraduate Grade Distribution: SPRING SEMESTERS

GRADE	Spr'99	Spr'00	Spr'01	Spr'02	Spr'03	Spr'04	Spr'05	Spr'06	Spr'07	Spr'08
A	13,921	14,105	14,843	15,644	15,967	16,899	14,910	14,915	16,200	21,376
A-	3,462	3,544	3,859	4,216	5,053	5,327	6,747	6,598	7,171	8,020
B+	3,223	3,748	4,034	4,417	4,715	5,082	5,921	6,411	6,847	6,957
B	11,836	11,877	11,540	11,927	11,203	11,108	8,984	9,419	9,570	10,841
B-	2,145	2,344	2,576	2,773	3,143	3,133	4,298	4,526	5,114	5,006
C+	1,785	1,971	1,938	2,162	2,271	2,176	3,083	3,280	3,535	3,450
C	7,294	7,105	6,836	6,546	6,284	6,081	5,275	5,849	6,238	6,246
C-	549	545	501	547	593	455	691			
D+	261	322	278	328	333	300	491	658	680	676
D	1,919	1,852	1,781	1,633	1,622	1,541	1,321	1,524	1,597	1,544
F	1,352	1,591	1,239	1,271	1,378	1,450	1,262	1,503	1,712	1,650
FX	1,343	1,616	1,170	990	1,038	993	1,047	1,041	1,016	1,012
I	437	543	276	360	466	4	332	393	390	861
IP										56
U	39	46	62	47	39	6	7	13	10	19
UX						24	17	78	84	104
S	1,107	1,074	1,096	1,079	1,132	1,061	1,189	1,354	1,304	1,434
SX						84	289	288	261	314
W	2,136	2,395	3,193	3,111	2,948	3,102	3,155	3,342	3,693	3,556
P	1		17	1	1					
PE	93	8	153	78	46					
PS	613	534	630	579	567	612	514	594	668	624
NR	47	137	16	63	103					
NG										1
NP										
UNK	145	179	308	182	231					
AU	109	119	114	113	121	95	77	76	115	79
AUX						5	12	16	14	6
AX						3	2			
AX-										
BX						7				
BX-										
BX+						1				
CX						5	2			
CX-										
CX+							1			
DX										
DX+										
FXX						1				
FEX						2				
Total:	53,817	55,655	56,460	58,067	59,254	59,556	59,627	61,878	66,219	73,832

Note: Plus & minus grades were implemented in Fall 1998.

Source: MIS100

Prepared by: TU Institutional Research.

TABLE 2. (continued)
Towson University
Percentage Distribution of Undergraduate Grades: SPRING SEMESTERS

GRADE	Spr'99	Spr'00	Spr'01	Spr'02	Spr'03	Spr'04	Spr'05	Spr'06	Spr'07	Spr'08
A	25.9	25.3	26.3	26.9	26.9	28.4	25.0	24.1	24.5	29.0
A-	6.4	6.4	6.8	7.3	8.5	8.9	11.3	10.7	10.8	10.9
B+	6.0	6.7	7.1	7.6	8.0	8.5	9.9	10.4	10.3	9.4
B	22.0	21.3	20.4	20.5	18.9	18.7	15.1	15.2	14.5	14.7
B-	4.0	4.2	4.6	4.8	5.3	5.3	7.2	7.3	7.7	6.8
C+	3.3	3.5	3.4	3.7	3.8	3.7	5.2	5.3	5.3	4.7
C	13.6	12.8	12.1	11.3	10.6	10.2	8.8	9.5	9.4	8.5
C-	1.0	1.0	0.9	0.9	1.0	0.8	1.2	0.0	0.0	0.0
D+	0.5	0.6	0.5	0.6	0.6	0.5	0.8	1.1	1.0	0.9
D	3.6	3.3	3.2	2.8	2.7	2.6	2.2	2.5	2.4	2.1
F	2.5	2.9	2.2	2.2	2.3	2.4	2.1	2.4	2.6	2.2
FX	2.5	2.9	2.1	1.7	1.8	1.7	1.8	1.7	1.5	1.4
I	0.8	1.0	0.5	0.6	0.8	0.0	0.6	0.6	0.6	1.2
U	0.1	0.1	0.1	0.1	0.1	0.0	0.0	0.0	0.0	0.0
UX	0.0	0.0	0.0	0.0	0.0	0.0	0.0	0.1	0.1	0.1
S	2.1	1.9	1.9	1.9	1.9	1.8	2.0	2.2	2.0	1.9
SX	0.0	0.0	0.0	0.0	0.0	0.1	0.5	0.5	0.4	0.4
W	4.0	4.3	5.7	5.4	5.0	5.2	5.3	5.4	5.6	4.8
P	0.0	0.0	0.0	0.0	0.0	0.0	0.0	0.0	0.0	0.0
PE	0.2	0.0	0.3	0.1	0.1	0.0	0.0	0.0	0.0	0.0
PS	1.1	1.0	1.1	1.0	1.0	1.0	0.9	1.0	1.0	0.8
NR	0.1	0.2	0.0	0.1	0.2	0.0	0.0	0.0	0.0	0.0
NG	0.0	0.0	0.0	0.0	0.0	0.0	0.0	0.0	0.0	0.0
NP	0.0	0.0	0.0	0.0	0.0	0.0	0.0	0.0	0.0	0.0
UNK	0.3	0.3	0.5	0.3	0.4	0.0	0.0	0.0	0.0	0.0
AU	0.2	0.2	0.2	0.2	0.2	0.2	0.1	0.1	0.2	0.1
AUX	0.0	0.0	0.0	0.0	0.0	0.0	0.0	0.0	0.0	0.0
AX	0.0	0.0	0.0	0.0	0.0	0.0	0.0	0.0	0.0	0.0
AX-	0.0	0.0	0.0	0.0	0.0	0.0	0.0	0.0	0.0	0.0
BX	0.0	0.0	0.0	0.0	0.0	0.0	0.0	0.0	0.0	0.0
BX-	0.0	0.0	0.0	0.0	0.0	0.0	0.0	0.0	0.0	0.0
BX+	0.0	0.0	0.0	0.0	0.0	0.0	0.0	0.0	0.0	0.0
CX	0.0	0.0	0.0	0.0	0.0	0.0	0.0	0.0	0.0	0.0
CX-	0.0	0.0	0.0	0.0	0.0	0.0	0.0	0.0	0.0	0.0
CX+	0.0	0.0	0.0	0.0	0.0	0.0	0.0	0.0	0.0	0.0
DX	0.0	0.0	0.0	0.0	0.0	0.0	0.0	0.0	0.0	0.0
DX+	0.0	0.0	0.0	0.0	0.0	0.0	0.0	0.0	0.0	0.0
FXX	0.0	0.0	0.0	0.0	0.0	0.0	0.0	0.0	0.0	0.0
FEX	0.0	0.0	0.0	0.0	0.0	0.0	0.0	0.0	0.0	0.0
Total:	100.0	100.0	100.0	100.0	100.0	100.0	100.0	100.0	100.0	99.9

Note: Plus & minus grades were implemented in Fall 1998.

Source: MIS100

Prepared by: TU Institutional Research.

Towson University

Undergraduate Grade Distributions: Spring Semesters

