

TWO WORLDS

FOR CHAMBER ENSEMBLE, JAZZ COMBO, ALTO VOICE, AND COMPUTER

(September 2001, August 2002)

Scott Leake

TWO WORLDS FOR CHAMBER ENSEMBLE, JAZZ COMBO AND COMPUTER

CHAMBER ENSEMBLE

1 Bb Clarinet
1 Piano
1 Violin
1 Cello

Score is in C

JAZZ COMBO

1 Eb Alto Saxophone
1 Sample based Synthesizer (ex. Alesis QS7)
1 Electric Guitar
1 Electric Bass (Doubling on Bass Synthesizer)
1 Drum Set

COMPUTER MUSIC SYSTEM REQUIREMENTS

Computer

2 Macintosh computers G3 400mhz or better. One is for the conductor interface and one is for the performer.
256mb of Ram
OS 9.1 or higher
1GB of hard drive space for storing audio files
MAX and MSP software (version 3.6.2 or better)

MIDI Control and sound reinforcement

MIDI interface
Control device such as a foot pedal or pedal board
OMS2.3.8
Sound amplification system for computer audio, El. bass, El. guitar, Synthesizer, and amplification of the chamber ensemble.

SPECIAL CONCERNS FOR JAZZ COMBO

Electric Guitarist should have a minimum complement of effects pedals that consists of: Distortion, chorus, digital delay and digital reverb. The Electric guitarist should also have an E-bow.

Electric Bass should have a minimum complement of effects pedals consisting of: chorus, and flanger. The Electric Bassist is also required to simulate an organ bass sound in Movement V. This can be accomplished with a five or 6-string bass, Bass pedals, or MIDI synthesizer with a bass pedal patch.

Synthesizer is required to have a Rhodes Piano Patch, and a Mellotron Strings patch. The actual instrument can be used if desired. Another option for the Mellotron would be Gmedia music's Mtron3.0 VST instrument. Another Macintosh computer dedicated for this purpose would be required.

Notational Information.

Special conductor cues for transition between movements are written in the computer part

Guitar pedals to be used are written into score and parts. Refer to the recording for settings.

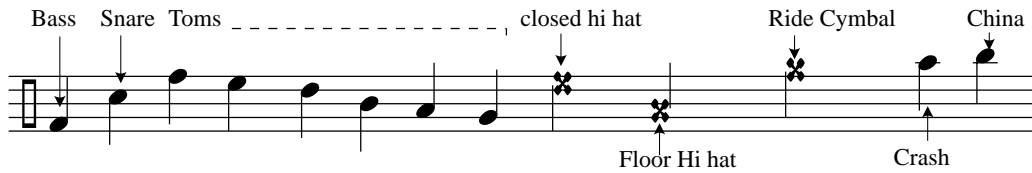
Some sections of the piece are performed without meter. Non metered sections include approximate timings..

Improvisation Boxes contain special instructions for sections of free improvisation.

**CONTINUE TO IMPROVISE
WITH BUILDING INTENSITY**

The dotted bar lines refer to the implied meter.
The performer has the option to improvise within the given meter signature or to ignore it.

Drum Key



ABOUT THE MUSIC

The music I have written has always been in three distinct genres. Jazz, Worship music, and Electronic music. At times, these different styles have been difficult to reconcile, as well as the decision about where I want to be as a composer.

This piece is an answer to this question. I do not consider this piece eclectic in the sense that it is a deliberate attempt to combine different styles of music. I would consider it a summary of what I find interesting in the music I have written during my time as a graduate student at Towson University.

The title “Two Worlds” refers to two musical characters. One is the music that contains little movement. It can reflect peace and calm, but can also reflect a tension and uncertainty. The other musical character contains manic and frantic movements. It reflects adventure and wildness, as well as confusion and a lack of center. These two musical characters interact in various ways and dance through the music freely, as they do in real life.

I am the song
I am the light
I am the reason
I am life.

Heard in the quiet of the morning
Perceived, within a cool refreshing breeze.
The Universe reveals, in my heart, you’ve torn the veil
I hear your voice and it’s calling, calling me home.
You are my Song of Songs
You are my light from light
You are my truth reason
You’ve brought me into new Life

ABOUT THE COMPUTER MUSIC

One computer is used to give the conductor feedback regarding score cues and the timing of the electronic music. Another computer is also used to cue specific sound files that are made from reprocessed sections of the music from the score.

At times, the computer music interacts with music already being heard. At other moments in the piece, the computer music is heard alone, offering commentary on specific musical phrases.

Movement 3 is for computer music alone. The music acts as a connecting bridge between the music of the chamber ensemble and the music of the Jazz Combo.

TWO WORLDS

PSALM

(PT. V)

STAGE SETUP

