

# Graduate Reading Programs

## Newsletter Fall 2006

### Reminders:

- If your name or contact information has changed please inform Teresa or Molly at (410) 704-5775
- Be sure to activate your Towson email account, or have it forwarded to the email account you check most frequently. details on pg. 2

### Inside this issue:

Graduates	2
Check your Email	2
Faculty Spotlight	3
Portfolio Info	3
Clinic News	4
Elective Offerings	4
CAS Information	5
Conferences	5
MWP Workshops	5
Off Campus Courses	6
Important Dates	6
Spring Schedule	7

## Letter from the Director

I hope that the school year has begun on a very positive note for you. We have some exciting news to report about the M.Ed in Reading Program. In fact, I would like to share with you information about this newsletter, welcome new fulltime faculty, mention our TLN and Southern Maryland offerings, explain NCATE, and offer you a favorite quote.

With this issue of the Graduate Reading Programs newsletter, we move to an electronic format. We hope that this change will enhance communication. If you know someone in the program who cannot access this newsletter, please call the Program office (410-704-5775) to request a paper copy.

We have an exciting fall line-up of courses and the spring schedule is beginning to shape up, too. You will see some new names on the schedule. We are thrilled to welcome two new fulltime faculty members: Professors Benhoff and Martinez. I know that some of you are enjoying their teaching already.

In St. Mary's County, we have the entire M.Ed in Reading Program. If you live closer to that site, you have been blessed with the able teaching of Dr. Brown and Professors Zumpano, Moreland, Chasen, Stover and others. Our praises go to our very capable administrator at the Southern Maryland Center, Beth Settle.

In addition to Southern Maryland, in fall 2006 we have fifteen other off-campus sections of courses. These are known as TLN—Towson Learning Network. If you are a teacher in a school district that partners with us, it is financially and geographically advantageous to take these sections of the required courses (we have been known to regularly offer REED 601/602, 609, 621, 663, 665) or electives (REED 660 is our most popular one). How do you find out what we are offering? Two ways: Call our Program #410-704-5775 or call our new coordinator for TLN, Ms. Grannas #410-704-4297. Consider this our best conduit for financial assistance to our worthy students.

If you took classes last year, you have probably heard about NCATE, the accreditation organization for our program. We have done a lot of behind-the-scenes work to align all of our courses with International Reading Association (IRA) standards and to collect artifacts to show what you are learning. Now we will gear up for the actual visit of the reviewers who will arrive in October 2007. Some of you will be interviewed and any one of you will be casually asked about the College of Education's Mission Statement—so see if you can find it in this newsletter.

What really matters in all of this, though, is how we can best teach reading and writing. Many teachers are still under siege and are not free to teach in ways that are best matched to the needs of their students. Let's support each other during these challenging times. One of my favorite quotes of the month: "I have always looked on disobedience toward the oppressive as the only way to use the miracle of having been born." (Oriana Fallaci, journalist and activist, who recently passed away.)

May our teaching continue to be strong and our vision unclouded,

B.P Laster

# Congratulation Graduates!!

*"A man who does not read has no advantage over the man who cannot read"*

*-Mark Twain*

## May 2006

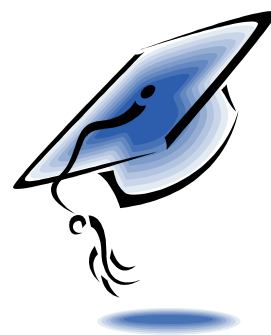
\*Michel Chilcote  
\*Leah Cohen  
\*Laura Greggs  
\*Kristen Hale  
\*Valerie Hemberger  
\*Minda Katz  
\*Lindsay Kitchen  
\*Catherine Klatt  
\*Dianne Libercci  
\*Monica Peacock  
\*Stacey Pietropaoli  
\*Laura Siegel  
\*Elizabeth. St. Laurent  
\*Shantille Stohl  
\*Frances Townsend  
\*Kathryn Williams  
\*Stanley Wolfe

## August 2006

\*Debra Amato  
\*Angela Ashley  
\*Tammy Barnes  
\*Karen Bonin

\*Danielle Bowers  
\*Michelle Bowersox  
\*Jennifer Brotzman  
\*Christina Clifford  
\*Barbara Darden  
\*Yuneca Deas  
\*Lindsay Derenberger  
\*Randa Fahmy  
\*Laren Farrell  
\*Margaret Fitz-Gibbon  
\*Dana Freundel  
\*Stephanie Hammond  
\*Lisa Hartley  
\*Michelle Herndon  
\*Jennifer Hobart  
\*Renee Hood  
\*Carol Inscoc  
\*Emily Knight  
\*Dawn Langley  
\*Pamela Lee  
\*Linda Love  
\*Lyda Marchiano  
\*Teresa McCann  
\*Michael McGlothlin

\*Lauren Merwin  
\*Julie Morgan  
\*Scott Morrison  
\*Linda Paolillo  
\*Kimberly Plagge  
\*Amber Powell  
\*Rena Redmond  
\*Jane Roache  
\*Laura Roland  
\*Patricia Sassano  
\*Leslie Spencer  
\*Trista St.Onge  
\*Sandra Wheeler  
\*Jeffrey Wild  
\*Sara Wolfson



## Please Check Your E-Mail!



We're heading in a new electronic direction! With over 500 students as part of this program, staying in contact with everyone can be cumbersome. We are now relying on mass e-mails to update you with important information and opportunities. The only way to do this is through your Towson email account. Be

sure to check your Towson account regularly, or have it forwarded to an account that you check often.

### **Forwarding your Email:**

1. Log onto your Towson webmail.
2. Click on the Pref button on your top tool bar.

3. In the "forward mail to" box enter your current e-mail address.

4. Click on the "keep local copy box" if you would also like to be able to read the email on your Towson account.

5. Scroll to the bottom of the page and click the save button.

# Spotlight on Our Faculty

**Susan Benhoff** received her M. Ed in Reading from Salisbury University. Prior to serving as a reading specialist, she held positions as a special education teacher and an early childhood teacher. She is a trained Reading Recovery Teacher and consults nationally in urban school districts. She continues to explore the link between student engagement and cultural understanding. Susan currently teaches REED 609 Reading Assessment and REED 663 Strategic Use of Materials. Her newest favorite children's book is [This is the Dream](#) by Diane Shore & Jessica Alexander, which shows how ordinary people can make contributions to our lives through non-violent change. In her free time, Susan enjoys black & white photography, attending theatrical performances and listening to spoken word.

**Dr. Gilda Martinez** received her undergraduate degree in Elementary Education-Science from the University of Maryland. She went on to earn her M.S. in Reading and an Ed.D. in Teacher Development & Leadership from John's Hopkins University. She has taught several courses at JHU and Loyola College. She also created and advised for the English as a Second Language (ESL) graduate certificate at JHU. She currently teaches REED 621 Reading Disabilities and REED 665 Content Area Reading and Writing. In her free time, Gilda enjoys being very active; she likes to do yoga, hike, ski & bike. She also likes to read, and over the summer she enjoyed [You're Wearing That? Understanding Mothers and Daughters in Conversation](#) by Deborah Tannen.

**Alyssa Zumpano** is the site coordinator and an instructor at the Southern Maryland Higher Education Center located in St. Mary's County. She attended undergraduate school at Indiana University of Pennsylvania. She went on to earn her Masters Degree in Reading at Towson University. She also earned an Administration I Certificate at Towson. She is currently teaching REED 601 Reading Theory and Practice and REED 663 Strategic Use of Materials at SMHEC. Her favorite children's book is [Curious George](#). This past summer she traveled to Italy, and also enjoyed reading. She read Nora Roberts' In the Garden trilogy, and [Leading a Successful Reading Program: Administrators and Reading Specialists Working Together to Make it Happen](#).

## Portfolio Information

Students are required to submit a portfolio that reflects the IRA Standards for Reading Professionals and represents their performance in the eight required REED courses. The portfolio must include (but is not limited to) the following items:

### REED 601:

- \*Autobiography
- \*Models Presentation Handout

### REED 609:

- \*Informal Assessment Reports
- \*Comparison of Test Results
- \*Survey of School Literacy Assessment

### REED 621:

- \*Focused Case Study

\*Disabled Reader Paper *or* Metacognitive/Cognitive Processing Paper

### REED 626:

- \*Final Case Report
- \*Memo to Parents

### REED 663:

- \*Research Based Instructional Project
- \*Text Set

### REED 665:

- \*Cross-curriculum Project
- \*Mini Case Study

### REED 726:

- \*Reflections on Paraprofessional or Peer Coaching
- \*Parent Workshop Materials

### REED 729:

- \*Seminar Research Paper

\*Paper Presentation

\*Reflective Essay

It is recommended that students keep an electronic backup of all course work. It is now required that students create *both* an electronic copy, including scanned grade reports, **and** a hard copy of the Portfolio. The electronic copy will be kept for our files. The hard copy of your portfolio must be turned in and presented at the Portfolio Gala held each semester. After it has been reviewed, it will be returned to you for your personal use. Be sure that the portfolio is complete upon turning it in.

### Mark Your Calendar....

For the M. Ed in Reading Portfolio Gala, which celebrates our outgoing students accomplishments.

Monday December 4th from 5:00-6:30 at Susquehanna Terrace

# Reading Clinic News



This summer the Graduate Reading Program held three classes on site at Cherry Hill Elementary/Middle School - the beginning and advanced Clinic Internship in Reading classes and the Guided Reading class. Forty two graduate students provided reading instruction to students in grades K-8 who attended the summer school program at Cherry Hill. Twenty nine teachers in the Clinic Internship classes provided one-on-one assessment and instruction to students to address

their specific reading needs. Teachers in the Guided Reading class provided small group instruction to other students. Teachers in the advanced clinic class conducted workshops for the parents of Cherry Hill students at both the summer school kick-off and at the Family Night celebration. At the conclusion of the clinic, we held a Reading Clinic Family Night dinner and activities for both students and their parents to celebrate the reading achievements of

the students. The event was held in a catering establishment in the Cherry Hill community and Towson University provided transportation for the families to and from the school and the restaurant. Funds provided by Towson also enabled the staff of Cherry Hill to purchase books and materials for their resource room. For the fall semester, sixteen Cherry Hill students and their parents are participating in the reading clinic on campus.

## Elective Offerings

### Spring 2007

#### *A NEW COURSE!!!*

We are excited to offer a NEW Course this Spring, *REED 712 Critical Conversations: Early Literacy Research, Policy and Practice*. This course will be taught by internationally renowned scholar in literacy, Dr. Bess Altwerger. It is designed for advanced graduate students seeking the opportunity to critically examine current policies, research and instructional trends in early literacy instruction. Students will engage in personal and collaborative inquiry into important issues affecting all elementary teachers and reading professionals. The class will examine current professional literature, early literacy research, and key public policy documents representing a range of contrasting perspectives in the field.

### Other On-Campus Offerings

- REED 628 Guided Reading
- ELED 647 Advanced Processing of Teaching and Learning
- ISTC Instructional Development

### Off-Campus Electives:

#### Harford HEAT Center

- ELED 665 Curriculum Theory and Development
- EDUC 660 Teaching in a Multicultural Society

#### Baltimore County

- EDUC 787 Instruction in Reading, TH/Chase
- REED 660 Integrating Literacy & Technology; TBA

#### Baltimore City

- REED 660 Integrating Literacy & Technology; Digital Harbor

### Howard County

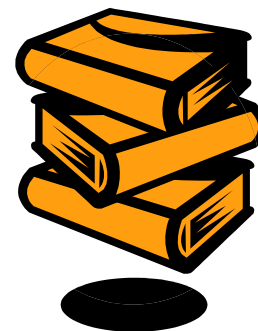
- REED 660 Integrating Literacy & Technology; TBA

### Minimester 2007

- ECED 607 Learner Diversity and Inclusion; TU/TH 5:00-9:30
- ECED 610 Learning Environments: Curriculum and Technology M/W 5:00-9:30
- ECED 670 Social Justice and Ethics TU/TH 5:00-9:30

### Congratulations!

Diana Kolego received the No Child Left Behind 2006 American Star of Teaching Award for going above and beyond her requirements to help her children learn!!



# Certificate of Advanced Study

## *Certificate of Advanced Study in Reading (CAS)*

The certificate of Advanced Study in Reading Education is designed for students wishing to continue their education at the post-masters level. The certificate will help develop the advanced knowledge and leadership skills necessary for

restructuring education. The certificate requires 30-credit hours and meets the standards outlined by IRA for reading coordinators.

For more information, visit:

<http://wwwnew.towson.edu/coe/rset/reed/cas/>



**Spring 2007  
Registration  
Begins  
November 1!!**

## Upcoming Conferences



### **-International Reading Association Regional Conferences**

\*October 15-17, 2006  
Southeast; Mobile Convention Center; Mobile, Alabama

[www.ira.org](http://www.ira.org)

### **-National Reading Conference 56th Annual Meeting:**

Nov. 29th-Dec. 2nd  
Millennium Biltmore Hotel  
Los Angeles, California

[www.nrconline.org](http://www.nrconline.org)

### **-National Council of Teachers of English Annual Convention:**

November 16-21  
Gaylord Opryland Hotel  
Nashville, Tennessee

[www.ncte.org](http://www.ncte.org)

### **-State of Maryland International Reading Association Council Conference (SoMIRAC):**

March 28th-30th, 2007

[www.somirac.org](http://www.somirac.org)

## Maryland Writing Project Workshops

The Maryland Writing Project is committed to improving students' writing skills through school and university collaboration on writing instruction.

Each year MWP hosts *Write to Learn Saturday Workshops*. Each workshop includes two presentations given by a MWP consultant.

The workshops are held from 9-12 one Saturday a month. Workshops are free (unless taken for 1 MSDE credit), but registration is required.

The dates for this years workshops are:

- October 28th**
- December 9th**

- January 27th**
- February 24th**
- March 31st**
- April 28th**

For more information and to register for the workshops please visit:  
[www.towson.edu/mwp](http://www.towson.edu/mwp)



# Off Campus Offerings

Location	Course #	Course Name	Day/School
Baltimore County	REED 602	<i>equivalent to REED 601</i>	WED/Perry Hall
Baltimore City	REED 609	Reading Assessment	TUE/Digital Harbor
Baltimore City	REED 621.701	Reading Disabilities	WED/Digital Harbor
Baltimore City	REED 663	Strategic Use of Materials	WED/Mt. Royale
Baltimore City	REED 665	Reading & Writing in the Content Areas	TUE/Digital Harbor
SMHEC	REED 621	Reading Disabilities	Southern Maryland
SMHEC	REED 665	Reading & Writing in the Content Areas	Southern Maryland
SMHEC	REED 740	Grant Writing in Education	Southern Maryland

## Important Dates to Remember

### Graduation Application Deadlines:

- \* *May Graduation-* February 1, 2007
- \* *August Graduation-* June 1, 2007

for more info please visit:  
<http://grad.towson.edu/graduation/>

### Graduation Ceremonies:

- \* *Fall 2006 Semester-* January 7th
- \* *Spring 2007 Semester-* May 24th

### Registration Dates:

- \* *Registration begins for Minimester 2007-* October 9th
- \* *Last day to register for Minimester 2007-* January 1st
- \* *Registration begins for Spring 2007-* November 1st
- \* *Last day to register for Spring 2007-* January 28th

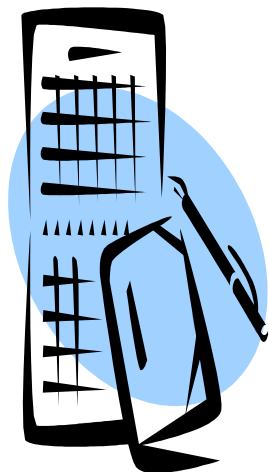
### First Day of Classes:

- \* *Minimester 2007-* January 2nd
- \* *Spring 2007 Semester-* January 29th

### Last Day of Classes:

- \* *Fall 2006 Semester-* December 11th
- \* *Minimester 2007-* January 23rd

A full academic calendar can be found online at:  
<http://onestop.towson.edu/calendars/>



# Tentative Spring 2007 Schedule

Please Note: Schedule is subject to change

<b>Course #</b>	<b>Course Name</b>	<b>Instructor</b>	<b>Day</b>	<b>Time</b>
<b>REED 601</b>	<b>Reading Theory and Practice</b>	<b>Mogge</b>	<b>WED</b>	<b>4:20-6:50</b>
<b>REED 609</b>	<b>Reading Assessment</b>	<b>Dicembre</b>	<b>WED</b>	<b>4:20- 6:50</b>
<b>REED 609</b>	<b>Reading Assessment</b>	<b>Benhoff</b>	<b>TUE ( may move to Balt. City)</b>	<b>4:20- 6:50</b>
<b>REED 621</b>	<b>Reading Disabilities</b>	<b>Dolan</b>	<b>TUE</b>	<b>4:20- 6:50</b>
<b>REED 621</b>	<b>Reading Disabilities</b>	<b>Martinez</b>	<b>THUR</b>	<b>4:20- 6:50</b>
<b>REED 626</b>	<b>Internship</b>	<b>Dicembre</b>	<b>TUE</b>	<b>4:20 - 6:50</b>
<b>REED 626</b>	<b>Internship</b>	<b>Benhoff</b>	<b>THUR</b>	<b>4:20 - 6:50</b>
<b>REED 628</b>	<b>Guided Reading</b>	<b>Book</b>	<b>TUE</b>	<b>7:00-9:30</b>
<b>REED 663</b>	<b>Strategic Use of Materials</b>	<b>Pitcher</b>	<b>WED</b>	<b>4:20 - 6:50</b>
<b>REED 665</b>	<b>Reading &amp; Writing in the Content Areas</b>	<b>Martinez</b>	<b>THUR</b>	<b>7:00-9:30</b>
<b>REED/ ELED 712</b>	<b>Critical Conversations: Early Literacy Research, Policy and Practice</b>	<b>Altwerger</b>	<b>WED</b>	<b>4:20-6:50</b>
<b>REED 726</b>	<b>Advanced Internship</b>	<b>Pitcher</b>	<b>TUE</b>	<b>4:20 - 6:50</b>
<b>REED 726</b>	<b>Advanced Internship</b>	<b>Dicembre</b>	<b>THUR</b>	<b>4:20 - 6:50</b>
<b>REED 729</b>	<b>Seminar in Reading</b>	<b>Altwerger</b>	<b>TUE</b>	<b>4:20 - 6:50 **</b>
<b>REED 729</b>	<b>Seminar in Reading</b>	<b>Altwerger</b>	<b>TUE</b>	<b>7:00-9:30 **</b>

\*\* Despite the time difference when the course is officially scheduled, both sections of REED 729 will meet at 5:00 PM

Department of Reading, Special Education  
and Instructional Technology

Towson University  
8000 York Road  
Towson, MD 21252-0001

Non- Profit  
U.S. Postage  
PAID  
Towson University

Program Director- Dr. Barbara Laster  
Graduate Assistants- Teresa Coffin  
Molly Knowles

