


WSFTP

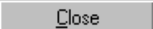
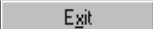
WSFTP LE (WSFTP) is a file transfer protocol (FTP) application which operates under Windows 95. It features an easy-to-use interface for transferring files between your desktop computer and remote host (SABER, TOE, TIGER, etc.) directories. If you maintain Web pages, you will find WSFTP a useful tool for uploading HTML and image files.

Starting & Stopping WSFTP

Starting

To run WSFTP from the Start Menu, press , point to **Programs**, point to **WSFTP**, then select **WSFTP LE**. The application will open a Session Properties dialog box as described on page 27.

Stopping

To shut down WSFTP, use the toolbar at the bottom of the application window. Click  to close the connection, then click  to shut down WSFTP.

WSFTP Features!

Whether or not you have used a Windows-based FTP tool before, you should have little trouble getting used to WSFTP. Its handy buttons and logical interface will allow you to make short work of your file transfers. Here are a few WSFTP features that will put a smile on your *interface*.

- WSFTP's system windows allow you to freely browse the folders and files of your local (PC) and remote host directories.
- You can manage your files from within WSFTP. Make directories, as well as rename, delete, view and run files.
- You can customize your installation from WSFTP's Options dialog box. Adjust the layout of your desktop, sort order of your directory listings, and other attributes.



↳ The WSFTP Desktop

The Local System is your desktop computer.

The Remote System is the host computer (e.g., SABER, TOE, TOA, TIGER, TRITON) to which or from which you will transfer files.

Select the drive and folder on your computer from or to which you want to transfer files.

Select the host directory from or to which you want to transfer files.

Click the column headers to instantly change the file sort order.

Click the column headers to instantly change the file sort order.

This panel displays the contents of the selected drive or folder.

This panel displays the contents of the selected directory.

The Local and Remote System Toolbars allow you to perform useful file maintenance operations such as viewing, renaming, and deleting.

Watch this area for error messages and status information.

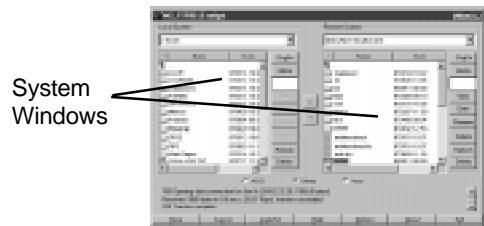
The WSFTP Toolbar allows you to disconnect, cancel a transfer, view the activity log, access help, customize WSFTP, and exit.

↳ WSFTP Help

WSFTP includes a limited help system through which you may find the answers to your questions about how the application works. To invoke WSFTP Help, click **Help** on the Toolbar. WSFTP does not use the standard Windows 95 Help dialog box, but you can still run searches by clicking **Search** on the Help Toolbar.

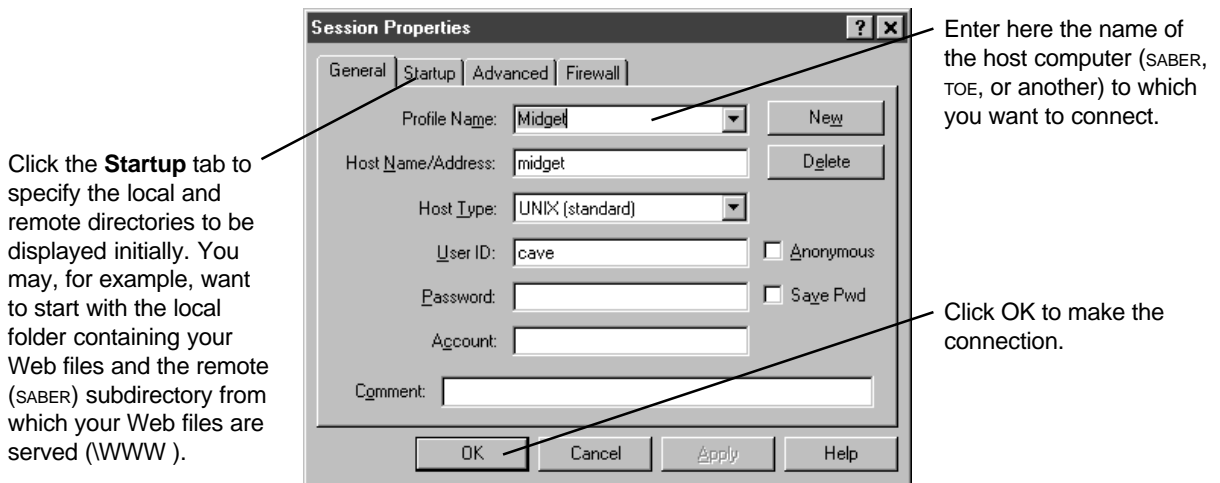
↳ Navigating WSFTP

In order to transfer a file, you must first select it in the appropriate system window. Navigate among the folders and directories in the system windows just as you would in Windows Explorer: double-click a folder to display its contents. Double-click the symbol at the top of the window to return to the previous level.



Connecting & Transferring Files


When you launch WSFTP, the Session Properties dialog box will appear. This is where you identify the host computer to which you want to connect.

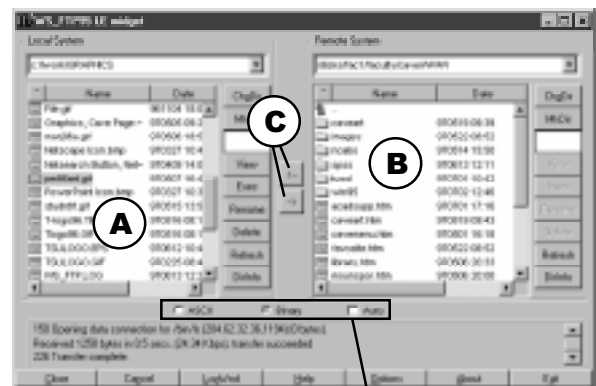


Once the connection is made, WSFTP will display the contents of the local and remote directories that you specified. Centered directly beneath the local and remote system windows are the File Transfer Mode controls (ASCII, Binary, Auto). When transferring to and from Towson's host computers, you need not change this setting from its default state (Binary); whether your files are binary (e.g., graphics) or ASCII text (e.g., html), WSFTP will transfer them appropriately. However, if you are working with a non-Towson host, you may need to specify the transfer mode by clicking the appropriate radio button.

Uploading

To transfer a file from your PC to a host:


- 1 Find and select the local file (A).
(Be careful not to double-click it.)
- 2 Open the remote directory into which you want to copy the file (B).
- 3 Click the upload button  (C).



File Transfer Mode Controls


Downloading

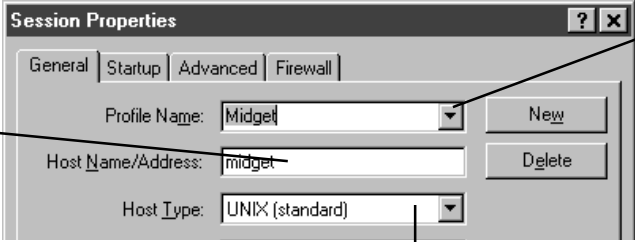
To transfer a file from a host to your PC:

- 1 Find and select the remote file (B).
- 2 Open the local directory into which you want to copy the file (A).
- 3 Click the download button  (C).

WSFTP supports Windows 95 long file names, but the host system to or from which you transfer may not. For example, long file names persist in transfers between PCs and SABER (or UNIX systems, in general). However, in transfers between PCs and TOE or TOA (VMS systems), characters are converted to uppercase and spaces are dropped. When transferred to TOE, for example, the local file `Meaning of Life.txt` will be renamed `MEANINGOFLIFE.TXT;1`.

Connecting to Hosts Other Than Towson's

Would you like to connect to FTP servers other than Towson's? All you have to do is enter the appropriate information in the Session Properties dialog box and click .



The screenshot shows the 'Session Properties' dialog box with the following fields and buttons:

- Profile Name:** A dropdown menu showing 'Midget' and a 'New' button.
- Host Name/Address:** A text input field containing 'midget' and a 'Delete' button.
- Host Type:** A dropdown menu showing 'UNIX (standard)'.

Annotations include:

- A line pointing to the Profile Name dropdown: "Click here to choose from a list of predefined sessions (FTP Servers). Choose from this list and WSFTP will fill-in the Host Name/Address and other required information."
- A line pointing to the Host Name/Address field: "If you know the Internet host name or IP address of the host to which you want to connect, enter it here."
- A line pointing to the Host Type dropdown: "If you know the host type, select it from the pull-down list, otherwise choose 'auto detect.'"

Additional Tips & Resources

Interested in learning more about WSFTP? Here are a few places to start:

WSFTP Release Notes


In the WSFTP section of your Start Menu, you will find the item **WSFTP Release Notes**, which contains a description of the application, a list of new features, and a table of command line arguments.

Ipswitch Technical Support Page

www.ipswitch.com/Support/index.html

From the *WSFTP LE Users* section of this page, you can download the *WSFTP User's Guide*, view the *WSFTP FAQ* page, and access other resources.

Saber & The World Wide Web

If you are uploading Web files (HTML, GIF, JPEG, etc.) to your SABER account for the purpose of publishing them on the World Wide Web, you must transfer them into your /WWW directory or one of its subdirectories. If you do not have a /WWW directory, you can easily create one: Enter `setup-www` at the SABER % prompt, then press . This procedure will create a /WWW directory and a personal home page named `welcome.html`.