



Dreamweaver Web Publishing for Students

Publishing Student Web Sites with Dreamweaver MX 2004

OTS PUBLICATION: DW01 • REVISED 11-29-2006 • TRAINING@TOWSON.EDU • OFFICE OF TECHNOLOGY SERVICES

=Shortcut =Advice =Caution

Introduction & Additional Resources

The scope of this document is limited to using Dreamweaver MX 2004 to open and edit Web sites on the student Web server Tiger. For additional information on Dreamweaver, we recommend the following resources:

Adobe Dreamweaver Home

<http://www.adobe.com/products/dreamweaver/>

Dreamweaver LiveDocs

<http://livedocs.macromedia.com/dreamweaver/mx2004/>

Working Wirelessly?

Do you plan to edit your Web site over a wireless connection? If so, you will need to install the Towson **VPN Client** on your computer and then use it to open a secure connection before publishing your Web pages. For detailed instructions, search the TU Web for the OTS (PDF) publication *VPN Virtual Private Network Access*.

Direct / Online Editing

1. Launch Dreamweaver MX 2004.
2. Locate the menu bar at the top of the screen and select **Manage Sites...** from the **Site** menu to open the Manage Sites dialog (Fig 1).
3. Click the **New** button and select **FTP & RDS Server** from the drop-down menu (Fig 1). If Dreamweaver displays a warning regarding the limitations of FTP & RDS connections, click the **OK** button to clear it and display the Configure Server dialog (Fig 2).
4. Enter a site name in the box labeled *Name* (Fig 2-1).
5. Select **FTP** in the box labeled *Access type* (Fig 2-2).
6. Enter **tiger.towson.edu** in the box labeled *FTP host* (Fig 2-3).
7. Enter **WWW** (all uppercase) in the box labeled *Host directory* (Fig 2-4).
8. Enter your student username (e.g., gwashi2) in the box labeled *Login*. Then, enter your password in the box labeled *Password* (Fig 2-5).

Dreamweaver will automatically mark the checkbox labeled **Save** and save your password so that you will not have to re-enter it later. **If you are working on a public computer (in a lab or classroom) or on a friend's computer, click on the checkbox to clear it.** Otherwise, the next person to use Dreamweaver may be able to open and edit your Web site.

9. Click the **Test** button (Fig 2-6) to verify that your settings are functional. If the test fails, review steps 4-8 and check for errors.
10. Enter your URL (e.g., <http://tiger.towson.edu/~username>) in the box labeled *URL prefix* (Fig 2-7). **Don't forget to insert the tilde character (~) before your username!**
11. Click **OK** to proceed (Fig 2-8). Dreamweaver will close the *Configure Server* dialog and return you to the standard desktop.

Figure 1

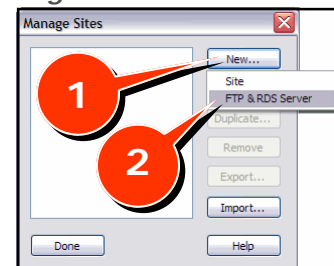
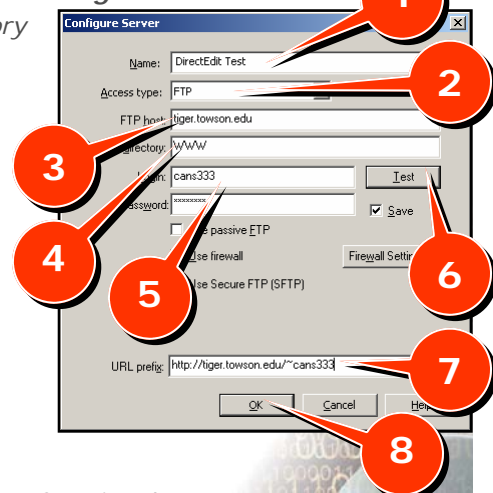


Figure 2



Opening Your Default Page

1. In the *Files* panel (Fig 3), double click the file **Welcome.html** (your default page). Dreamweaver will open the Web page for editing.
2. Edit your file as desired.
3. Select **Save** from the **File** menu to save the revised file *to the Web server*.



When editing online, saving a file and publishing (or putting) a file are one and the same; so, there is no need to subsequently publish or put your files to the server.

4. Repeat steps 1-3 with any additional files that require editing.

Local / Offline Editing

Site Creation

1. Launch Dreamweaver MX 2004.
2. On the Dreamweaver Start Page, in the Create New column, click **Dreamweaver Site...** (Fig 4). This will open the Site Definition dialog. Click the **Basic** tab if it is not already selected.

Figure 4



3. Enter a name for your site where prompted and click **Next >**.
4. Select *No, I do not want to use a server technology* where prompted and click **Next >**.
5. Select *Edit local copies on my machine, then upload to server when ready* where prompted.
6. Beneath the prompt *Where on your computer do you want to store your files?*, enter or browse to the drive and folder in which you want to store a local copy of your Web. Then click **Next >**.
7. Select **FTP** under the prompt *How do you connect to your remote server?* Dreamweaver will display a site definition form (Fig 5).
8. Enter **tiger.towson.edu** under the prompt *What is the hostname or FTP address of your Web server?* (Fig 5-1)
9. Enter **WWW** (all uppercase) under the prompt *What folder on the server do you want to store your files in?* (Fig 5-2)
10. Enter your student (Tiger) username (e.g., gwashi1) under the prompt *What is your FTP login;* then, enter your Tiger password under the prompt *What is your FTP password:* (Fig 5-3)
11. Click the **Test Connection** button to verify that your settings are functional (Figure 5-4). If the test fails, review steps 7-10 and check for errors.



In Step 10, Dreamweaver automatically marked the checkbox labeled **Save** to save your password for future use. **If you are working on a public computer (in a lab or classroom) or on a friend's computer, click the Save checkbox to clear it.** Otherwise, the next person to use Dreamweaver may be able to open and edit your Web site.

12. Click **Next >** to proceed (Fig 5-5).
13. Select *No, do not enable check in and check out* where prompted and then click **Next >**.

Figure 3

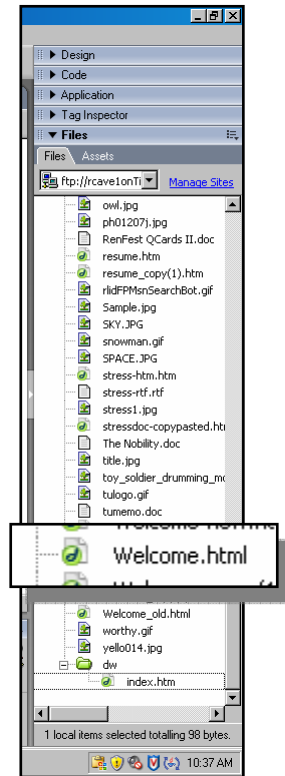
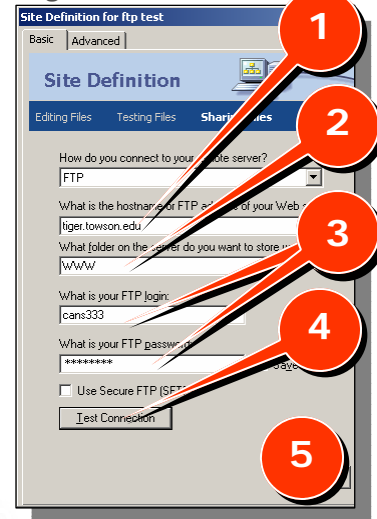


Figure 5



Dreamweaver will close the Site Definition dialog and display a summary of your configuration. Click **Done** to return to the standard view.

Downloading Your Existing Site

1. Locate the Files panel on the right side of the Dreamweaver MX desktop and click the **Expand/Collapse** button (Fig 6-1). The button is the rightmost of the seven buttons on the Files toolbar. Dreamweaver will open a two-panel view (Fig 7); the left panel will display files residing in your account on the Web server, the right panel displays files residing in your local Web folder (the one you identified in step 6 above).
2. Click the Connect button (Fig 7-2) to establish a connection with Tiger and display your remote files.
3. In the Left panel, click the WWW/ folder at the top of your folder list (Fig 7-3).
4. Click the **Get** button (downward pointing green arrow) on the toolbar (Fig 7-4), and respond **OK** to the prompt *Are you sure you wish to get the entire site?*
5. Once Dreamweaver completes the download, you should see the same files and folders displayed in both panels (Fig 7-5). Click the **Collapse/Expand** button (Fig 7-6) to collapse this view and return to the standard desktop.

Figure 6

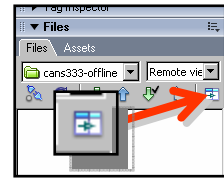
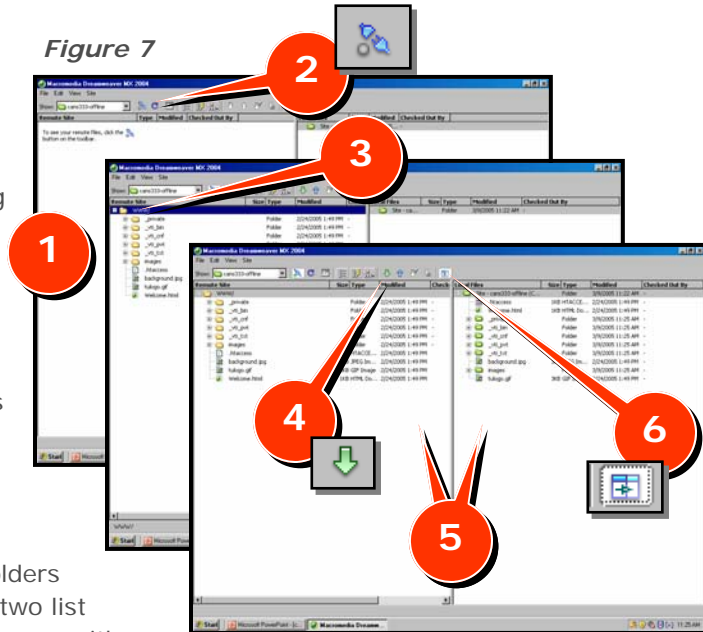


Figure 7

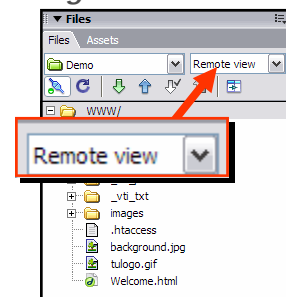


- ★ Dreamweaver displays your Web files and folders in the File panel. Using the rightmost of the two list boxes at the top of the File panel, you can choose either a remote view or a local view (Fig 8).

Editing Web Pages and Saving Changes

1. Select **Local view** from the list box (Fig 8) in the upper right corner of the *Files* panel.
2. Double click the file **Welcome.html** (your default page). Dreamweaver will open the page for editing.
3. Edit your file as desired.
4. Select **Save** from the **File** menu to save the revised file to your local Web folder.
5. Repeat steps 2-4 with any additional files that require editing.

Figure 8



Publishing (Putting) Local Web Site to the Web Server (Tiger)

1. Select one or more files in the *Files* panel (Local view). Hold-down the Ctrl key while clicking to select multiple files.
2. Click the **Put Files** button (upward pointing blue arrow). If prompted to include dependent files, click **Yes**.

Alternatively...

1. Click the **Expand/Collapse** button on the *Files* panel toolbar (Fig 6) to display both the local and remote folder lists.
2. Select **Synchronize...** from the **Site** menu. Dreamweaver will display a *Synchronize Files* dialog (Fig 9).
3. Select **Entire...Site** from the *Synchronize* box (Fig 9-1).
4. Select **Put newer files to remote** from the *Direction* box (Fig 9-2).
5. If you deleted local files and wish for their remote counterparts to also be deleted, click the checkbox labeled **Delete remote files not on local drive** (Fig 9-3).
6. Click the **Preview** button (Fig 9-4) to review a list of the files Dreamweaver will copy to or delete from the Web server. To exclude a file, clear the checkbox in the *Action* column.
7. Click **OK** to begin synchronizing. When finished, click **Close** to close the Synchronize dialog.
8. Click the **Collapse/Expand** button (rightmost on the toolbar) to collapse this view and return to the Dreamweaver desktop (Fig 7-6).

Figure 9