

Macintosh

KSMB Printing for Mac OS X



Overview

KSMB printing is a printing solution that allows TowsonU Macintosh computers to connect and use networked printers, locally shared or from a server. KSMB is a service that allows for authenticated printing from a Macintosh computer to a University printer via Samba's Kerberos support.

In order for a Macintosh to print to a University printer you must run KSMB install files. The KSMB install files only need to be installed once per Macintosh computer to allow for connectivity. Each printer that you need will need to be added individually.

To use any TowsonU shared printer, the client will need to be:

1. Logged on to the TowsonU domain, not a local account.

Note: The NetID (username) logged into the Mac will need to have administrative rights. This procedure only applies to system Mac OS 10.4 Tiger. Mac OS 10.5 and higher has a built-in printing solution. Each time you print from a Mac to a campus network printer you must authenticate by changing your name to your NetID and typing the password.

2. (On campus) You must be either plugged in to the wired network (preferred) or on the TU-secure (TowsonUwireless) wireless network, which is less reliable.

Process Summary

Overview

1. Intro to KSMB
2. Requirements

Set-Up New Printer

1. Download
2. KSMB Installation
2. Adding Printer

the

Installing KSMB printing for Mac OS X (10.4)

1. Download the KSMB printing .dmg file to your Mac from the OTS website using the URL listed below. Please note: you will need to enter your TU User Name and Password to download the file.

<http://wwwnew.towson.edu/adminfinance/ots/CoreTechSecurity/OTSDownloadsfacstaff.asp>

2. Double-click on the file, mounting the drive (**Figure 1**).
3. If it is not already, open the **KSMBprinting** drive (**Figure 2**).
4. Double-click the file **ksmbinstaller** (**Figure 3**).

Figure 1

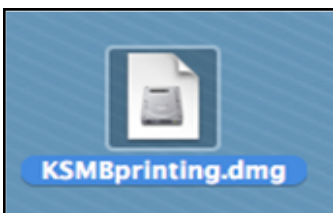
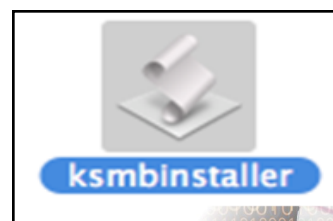


Figure 2



Figure 3



- Two terminal windows will appear, the foremost (entitled *sudo*) will require the password for the NetID (username) currently logged in. Make sure the foremost window is active, and type in the password. There will be no indication that a password is being typed.

If the message "Sorry, try again." appears, the password was not typed correctly. Enter the NetID password again.



If there are error messages after attempting to type in the password, the program did not install properly. This indicates the account does not have Administrative rights on the computer. Log off the computer and back on, and attempt the instructions again. If there are error messages again, there may be Admin permissions issues. Please contact the Faculty/Staff Help Center at 410-704-5151, select menu options 2+2+2 and inform staff that you are using this document and that you want to verify that you have Administrative rights on your computer; if you don't have Administrative rights, staff will have to setup an appointment with you to install them.

- Reboot the system after completing the install successfully. This will allow the printing solution to be used correctly on the Macintosh.

After these steps are completed, KSMB printing setup is complete. Anyone logged on with their NetID (username) account on this computer will be able to use this solution for printing on University network printers.

Adding a Towson Networked Printer with KSMB

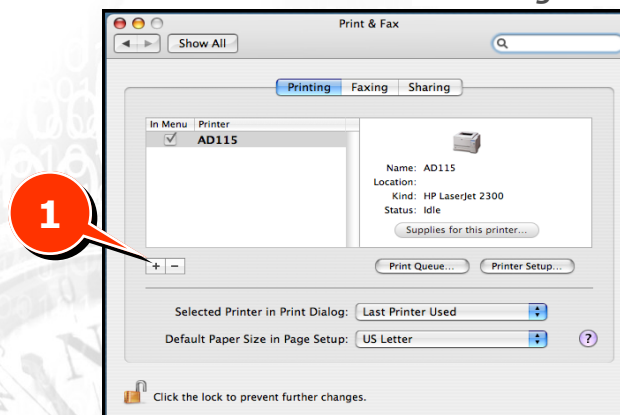
- Open **Printer & Fax** in **System Preferences** (**Figure 4, 1**).

Figure 4



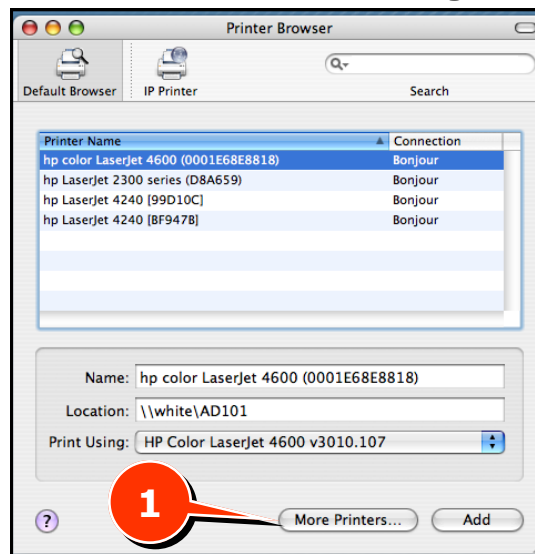
- Click on **+** (Plus sign) to add a printer (**Figure 5, 1**).

Figure 5



3. Hold down the **Option key** and click '**More Printers**' (Figure 6, 1).

Figure 6



4. In the top dropdown menu, choose '**Advanced**' (Figure 7)
 - a. In the **Device** dropdown menu, choose "**Windows Printer via SAMBA with kerberos support v1.0**" (Figure 7, 1).
 - b. In **Device Name**, enter a name for the printer (i.e. "AD115") - this does not have to be the same as the printer name that is selected, but it would be helpful to keep it the same (Figure 7, 2).
 - c. In **Device URL**, enter the path to the printer, in the form of ksmb://ServerName/PrinterName - i.e. "ksmb://white/AD115" (Figure 7, 3)
 - d. In the **Printer Model** dropdown, choose the appropriate printer model - i.e. "HP LaserJet 8100 Series" (Figure 7, 4).
 - If the printer model is not found in the menu, the drivers will need to be acquired from the manufacturer either via a website or CD supplied with the printer.
 - e. Click the **Add** button (Figure 7, 5).
5. Once the printer is successfully added, anyone logged in to TowsonU on the Macintosh will be able to send print jobs to this printer.

Figure 7

