




Connecting To a File Share From A Mac

SMB Drive Mapping Process For OS X

OTS PUBLICATION: MAC1 • REVISED 03-23-2010 • TRAINING@TOWSON.EDU • OFFICE OF TECHNOLOGY SERVICES

 =Shortcut  =Advice  =Caution

What is a File Share?


A file Share (a.k.a. share or remote volume) is hard drive space available for access over the campus network or the Internet. File Shares are most commonly used as file storage. There are several advantages to using file storage that is not on your Mac:

1. Your files are regularly backed up.
2. You have access to files from your office, classroom, and off campus locations.
3. Some file shares are available for groups to access (such as a file cabinet in the main office that contains documents everyone in the group needs).
4. Some resources, such as your web site, are made available to the Internet from a share on the Web Server.

Remote file storage is quickly becoming the dominant location for saving computer files. The process included in this document will assist you in locating and connecting to available file shares.

What File Shares Can I Access?

A growing number of resources on campus are able to be accessed through drive mapping. Listed below by name are the most common file shares by name and their associated paths.

-  Other file shares may be available depending on which department, committee, organization or workgroup you are associated with. Check with your Field Services support staff or your committee/organization's chair to see if there are other shares available to you.

Note: Contact the Help Center at 410-704-5151, select menu options 2+2+2 or submit a [Web Support Request](#) if you do not know the file share name for your department or group.

Faculty & Staff:

- **Your personal file share ("H: drive" to PC users)**
smb://homeshare/YourNetID\$
- **Your departments file share ("O: drive" to PC users)**
smb://deptshare/DepartmentShareName\$
- **Your Windows based web site account (pages.towson.edu)**
smb://tuweb/wwwYourYourNetID\$
- **Your Unix based web site account (saber.towson.edu)**
smb://saber/YourNetID
- **Department and group web share (Wwwnew.towson.edu)**
smb://www1/wwwYourGroupName\$

Students:

- **Network file storage and Web site (tiger.towson.edu/~NetID)**
smb://tiger/NetID
- **Organization and Group web sites (wwwnew.towson.edu/GroupName)**
smb://www1/wwwYourGroupName\$

- ★ The general rule for connecting to a file share is to take the windows share path, add the "SMB:" prefix and invert the slashes (e.g. \\homeshare\NetID\$ becomes smb://homeshare/NetID\$).

How Do I Connect to a File Share?

1. From the Mac OS X desktop, select **Go > Connect to Server...** (Figure 1, 1).
2. In the **Connect to Server** window that appears type the desired the smb path (Figure 2, 1) and click the **Connect** button (Figure 2, 2).
Note: See the **What File Shares I Access?** section on Page 1 for help with the syntax or call the Help Center at 410-704-5151.
3. In the **SMB/CFIS Filesystem Authentication** window, type your TowsonU NetID (Figure 2, 1) and your NetID and password (Figure 2, 2) into the "Password" field.
- ⚠ 4. The **Add to Keychain** checkbox (Figure 2, 3) should remain unchecked.
5. Click **OK** (Figure 2, 4). Your file share will appear on the Desktop.

Connect to TU's Network Off-Campus

Mounting a file share from a Mac connected the Internet outside TU's network is possible. Towson University's network is protected by security precautions that require an extra step in the process. Creating a safe connection between your Mac and the interior of Towson University's network will allow you to mount a share as if you were on campus. This is done by installing and using the Cisco VPN client for Macintosh OS X. A customized version of this client application is available in the "Downloads" section of the OTS web site located at:

- ⚡ <http://www.towson.edu/ots>.

Faculty/staff Macs upgraded as part of the last computer roll out may already be mapping your personal and department drives. If your Mac requests your NetID (Username and Password) at the log-in screen then your personal and department drives will mount as the Mac OS X desktop appears.

Figure 1

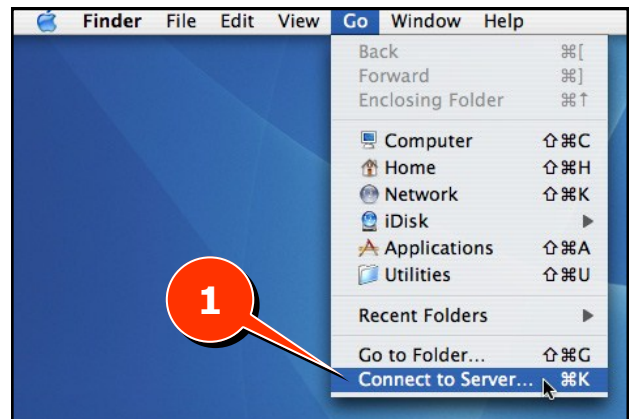


Figure 2

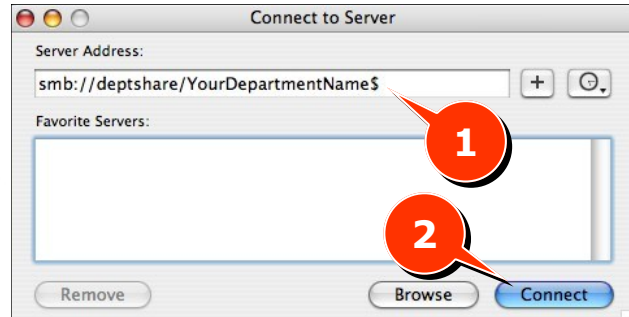


Figure 3

